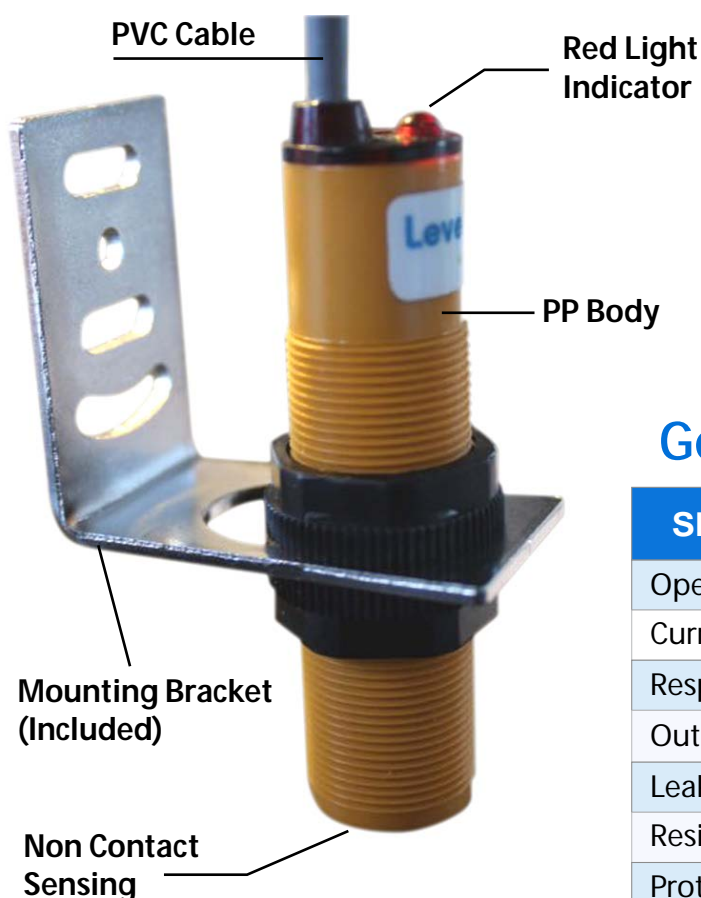


Levelpro Leak Detetion (Non Contact) Sensor

Levelpro LDS-YN Industrial Series is an advanced All Plastic Corrosion Resistant Leak Detection Liquid Level Sensor that utilizes ultra-sensitive electrostatic technology, which constantly and accurately sense the presence of liquids.

These sensors are Ideally suited for monitoring the interstitial area between double wall tanks, tank Retention Dikes, Secondary Containment Sumps, and areas where Process Pumps and Valves are utilized. The LDS-YN sensor has been engineered to withstand even the most extreme conditions while including features designed to optimize performance and reduce maintenance.

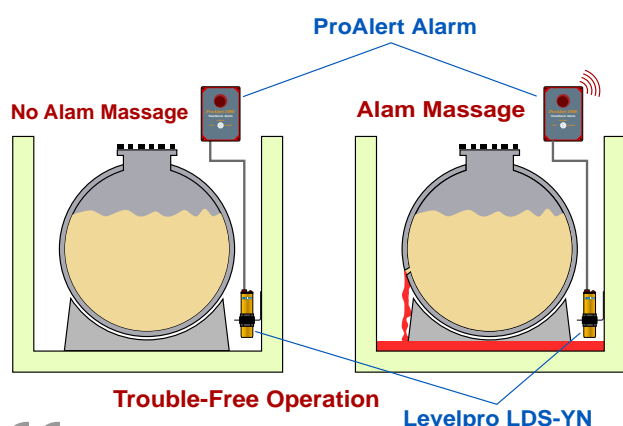


Features

- ▶ Suitable for Corrosive Environments
- ▶ High Stability with Thermal Compensation
- ▶ PP All Plastic Body
- ▶ Non-Contact Technology

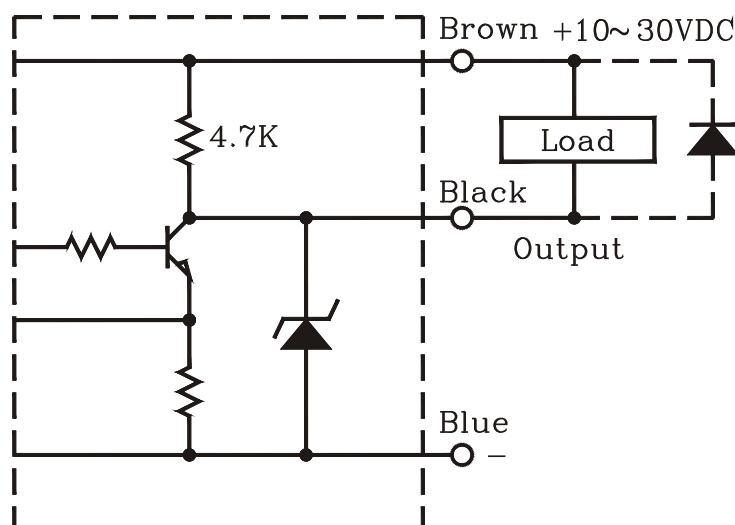
General Data

| SPECIFICATION | DESCRIPTION |
|------------------------|-----------------------------------|
| Operating voltage | 10-30 VDC |
| Current consumption | 20 mA max. |
| Response frequency | 100Hz |
| Output current | 150 mA max. |
| Leakage current | 0.8 mA max. |
| Residual voltage | 0.8 V max. |
| Protection circuit | Short Circuit & Polarity Reversed |
| Target | Liquid Level |
| Operating circumstance | -25 C - +80 C : 35% -95%RH |
| Case/Dimension | General Purpuse |
| Output status | NO / NC |
| Output method | NPN Relay Output |
| Sensing distance | 20.0 mm |
| Operating voltage | 10-30 VDC |
| Sensitivity adjuster | 14 Turns Trimmer |
| Housing material | PP |



Wiring Diagram

DC Powered NPN Relay Mode



Dimensions

